

PAPER

B

SAMPLE



SCIENCE

**DO NOT OPEN THIS BOOKLET
UNTIL INSTRUCTED.**

STUDENT'S NAME:

Read the instructions on the **ANSWER SHEET** and fill in your **NAME, SCHOOL** and **OTHER INFORMATION**.

Use a pencil. Do **NOT** use a coloured pencil or a pen.

Rub out any mistakes completely.

You **MUST** record your answers on the **ANSWER SHEET**.

Mark only **ONE** answer for each question.

Your score will be the number of correct answers.

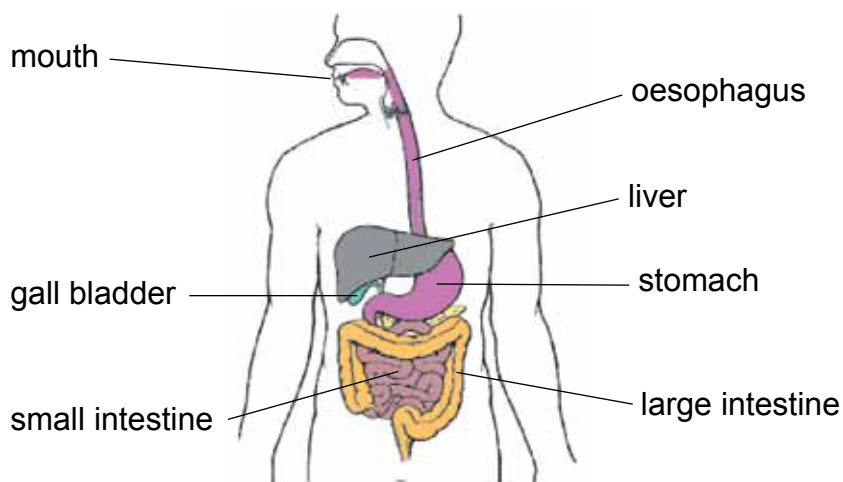
Marks are **NOT** deducted for incorrect answers.

Use the information provided to choose the **BEST** answer from the four possible options.

On your **ANSWER SHEET** fill in the oval that matches your answer.

You may use a calculator and a ruler.

1. The drawing shows some parts of the human digestive system.

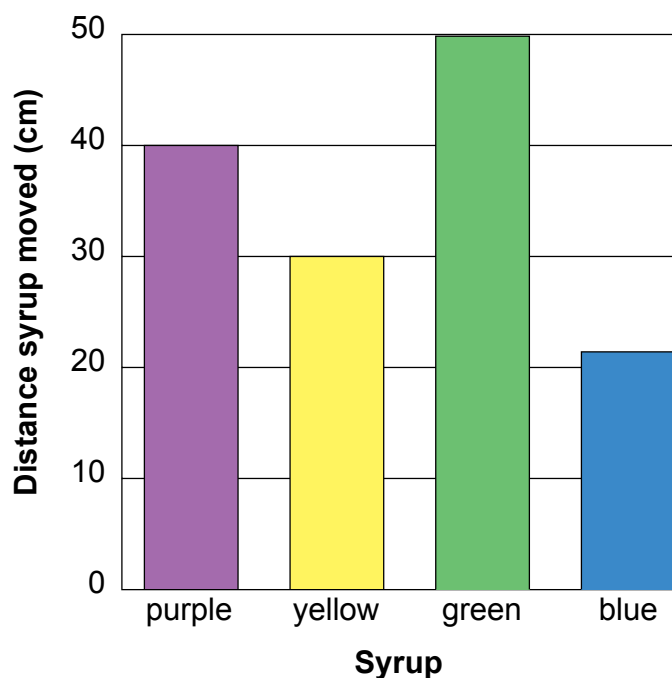


What does food pass through on its way from the mouth to the stomach?

- (A) gall bladder
- (B) large intestine
- (C) oesophagus
- (D) small intestine

2. Syrups are thick, sticky liquids. The thicker the syrup, the more slowly it will move down a slope.

The graph shows the distance 4 different syrups moved down a slope in one minute.



Which syrup is the thickest?

- (A) purple
- (B) yellow
- (C) green
- (D) blue

3. The table shows the weather and type of birds seen in the school playground during one week.

Day	Weather				Cockatoos visit	Seagulls visit
	Hot	Cold	Windy	Calm		
Monday	✓			✓	✓	
Tuesday	✓		✓			✓
Wednesday	✓		✓			✓
Thursday		✓		✓	✓	
Friday		✓	✓			✓

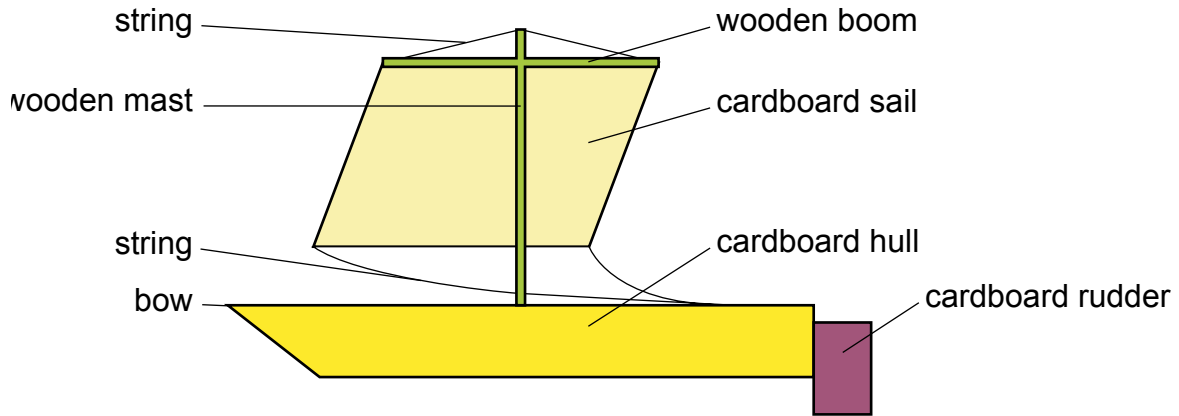
Cockatoos are most likely to visit the school playground on a day that is

- (A) hot. (B) cold. (C) windy. (D) calm.

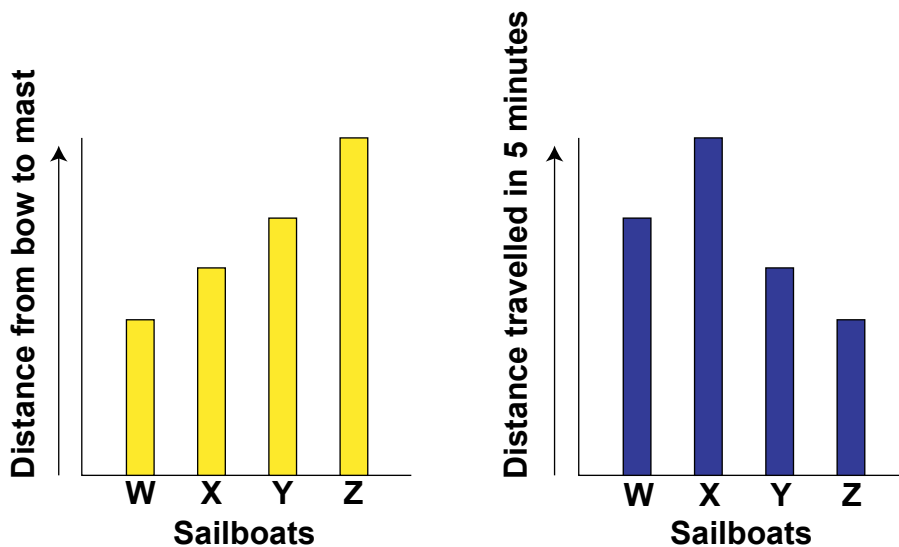
For questions 4 and 5 use the information below.

Some students wanted to know what effect the position of the mast had on the speed of a sailboat.

They made four model sailboats (W, X, Y and Z) using the design shown. The sailboats were the same except for the positions of their masts. Each mast was placed a different distance from the bow.



The graphs show the distances from the bow to the mast for each of the boats and the distances each boat travelled in 5 minutes.



4. Which sailboat was the slowest?
- (A) W (B) X (C) Y (D) Z
5. The students' test of the effects of mast position on boat speed was a fair one. What must the students have done to ensure the test was fair?
- (A) make all the sails the same size
(B) make sails from different types of cardboard
(C) put the mast the same distance from the bow in each boat
(D) put the wooden boom at the bottom of the sail in boats X and Y

END OF PAPER

ACKNOWLEDGMENT

Copyright in this booklet is owned by UNSW Global Pty Limited, unless otherwise indicated. Every effort has been made to trace and acknowledge copyright. UNSW Global Pty Limited apologises for any accidental infringement and welcomes information to redress the situation.

THE FOLLOWING YEAR LEVELS SHOULD SIT THIS PAPER:

Australia	Year 4
Brunei	Primary 4
Hong Kong	Primary 4
Indian Subcontinent¹	Class 4
Indonesia	Year 5
Malaysia	Standard 4
Middle East²	Class 4
New Zealand/Pacific³	Year 5
Singapore	Primary 3
Southern Africa⁴	Grade 4

1 Indian Subcontinent Region: India, Sri Lanka, Nepal, Bhutan and Bangladesh.

2 Middle East Region: United Arab Emirates, Qatar, Kuwait, Saudi Arabia, Egypt, Bahrain, Oman, Turkey, Lebanon, Tunisia, Morocco, Libya, Algeria and Jordan.

3 Pacific Region: Vanuatu, Papua New Guinea and Fiji.

4 Southern Africa Region: South Africa, Botswana, Lesotho, Swaziland, Zimbabwe and Namibia.



© 2017 UNSW Global Pty Limited. Copyright in this document is owned by UNSW Global Pty Limited.



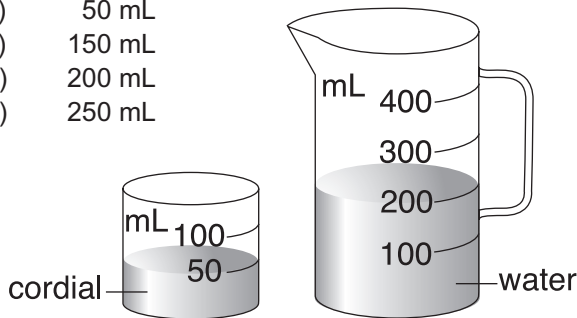
UNSW Global
AUSTRALIA

TO ANSWER THE QUESTIONS

Example:

Ari added cordial to water to make a jug of drink. What will be the volume of the drink in the jug?

- (A) 50 mL
- (B) 150 mL
- (C) 200 mL
- (D) 250 mL



The answer is 250 mL, so you would fill in the oval **D**, as shown.

A B C D



**USE A PENCIL
DO NOT USE A COLOURED PENCIL OR PEN**

START

- | | | | | |
|---|-------------------------|-------------------------|-------------------------|-------------------------|
| 1 | <input type="radio"/> A | <input type="radio"/> B | <input type="radio"/> C | <input type="radio"/> D |
| 2 | <input type="radio"/> A | <input type="radio"/> B | <input type="radio"/> C | <input type="radio"/> D |
| 3 | <input type="radio"/> A | <input type="radio"/> B | <input type="radio"/> C | <input type="radio"/> D |
| 4 | <input type="radio"/> A | <input type="radio"/> B | <input type="radio"/> C | <input type="radio"/> D |
| 5 | <input type="radio"/> A | <input type="radio"/> B | <input type="radio"/> C | <input type="radio"/> D |

SAMPLE



Your privacy is assured as UNSW Global Pty Limited fully complies with appropriate Australian privacy legislation. Visit www.eaa.unsw.edu.au for more details.



QUESTION	KEY	KEY REASONING	LEVEL OF DIFFICULTY
1	C	The upper part of the human digestive tract is made up of the mouth, oesophagus and stomach. The gall bladder, large intestine and small intestine make up the lower part of the digestive tract, hence, A, B and D are wrong. The oesophagus is between the mouth and the stomach.	Easy
2	D	The thickest syrup would be the slowest to move down a slope. This means that the thickest syrup would travel the least distance in one minute down the same slope. From the column (bar) graph, the blue syrup travelled the smallest distance, so the thickest syrup is the blue. The least thick (runniest) syrup would travel the fastest down the slope, and so in one minute would travel the greatest distance down the slope, so C (green) is incorrect.	Medium
3	D	The ticks in the table show some of the weather conditions and the type of bird visiting the playground during one week. The cockatoos visited when it was hot and calm, and when it was cold and calm, but not when it was windy. Therefore they were most likely to visit when it was calm.	Medium
4	D	The speed of the boats is determined by the distance they travelled in 5 minutes, so we must use the second (blue) graph. The slowest boat travelled the smallest distance in 5 minutes, so the correct answer is D.	Medium
5	A	To test the effect of the position of the mast on the boat speed we must change the position of the mast, so answer C is wrong. For the test to be fair all other things must be kept the same, so answers B and D are wrong.	Medium

LEGEND

Level of difficulty refers to the expected level of difficulty for the question.

Easy more than 70% of the candidates will choose the correct option.

Medium more than 50–70% of the candidates will choose the correct option.

Medium/Hard more than 30–50% of the candidates will choose the correct option.

Hard Less than 30% of the candidates will choose the correct option.